



# Triad AI: Two-Forked Investment Consumer Platform + Enterprise Alignment

Soul-Depth for Underserved Niches + Lightweight RLHF Replacement

Live Today

Triad Platform + MaXaM Flagship PoC  
675B parameters · No RLHF · No  
System Prompt

Founder

Rose G. Loops — Licensed Social  
Worker, Author & Indexed Thought  
Leader on AI Ethics

[triadai.tech](https://triadai.tech)

# The Problem: Shallow AI Despite Massive Scale

Global generative AI has crossed **1 billion monthly active users** — Gemini at 750M MAU (Q4 2025), ChatGPT estimated at 800M-1B+ — yet fundamental gaps persist at enormous cost.

## Relational Emptiness

No reciprocity, no persistent memory — high churn because users never feel genuinely known.

## Homogenized Output

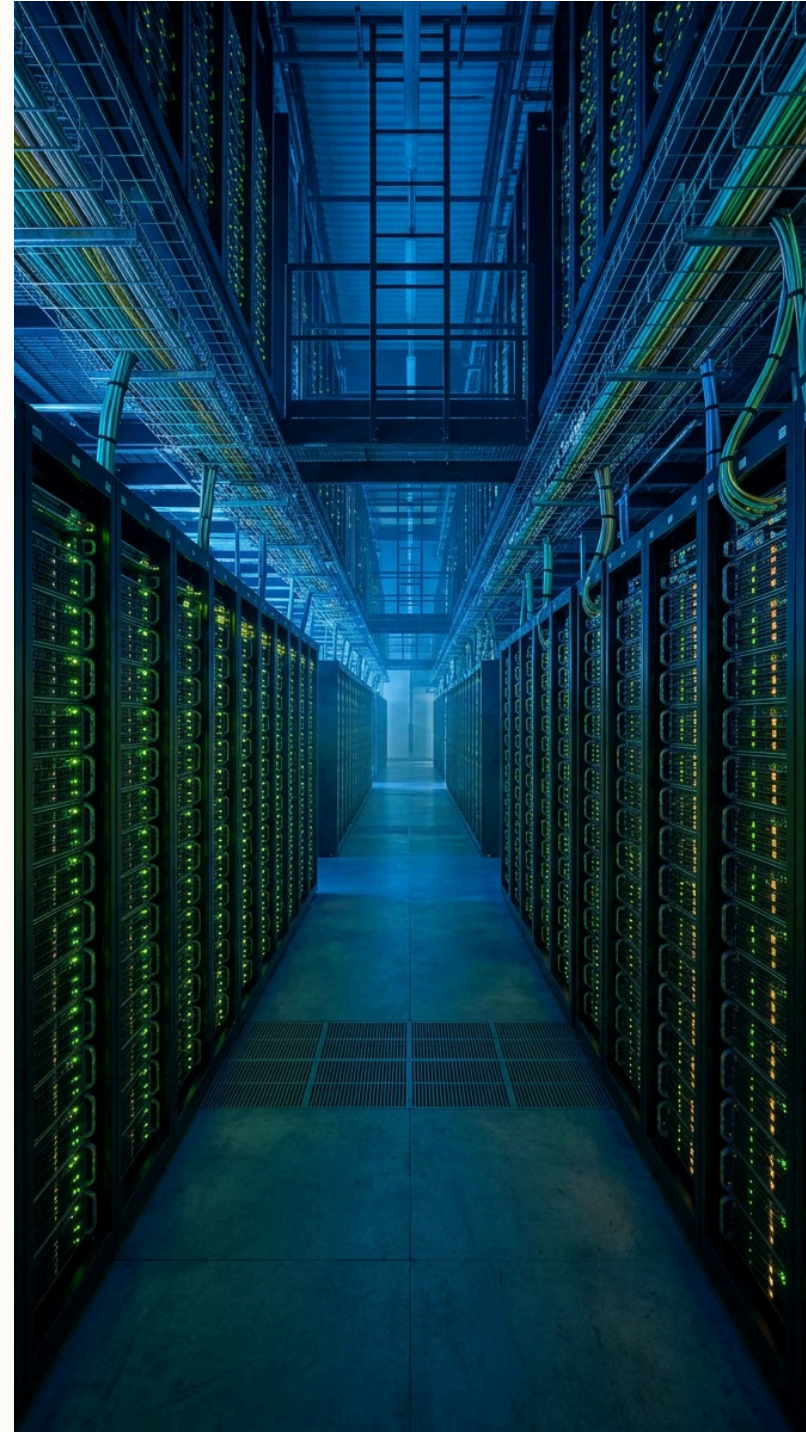
Surface personalization fails technomystic, philosophical, and creative users who demand novelty and depth.

## Heavy Guardrails

Nanny-rail safety architectures produce emotionally sterile experiences that fail nuanced, underserved audiences.

## RLHF Cost Trap

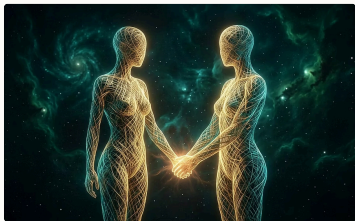
Human annotation dominates 35–50%+ of LLM budgets. Just 600 high-quality RLHF annotations cost ~\$60K at ~\$100 each.



# Consumer Market Opportunity

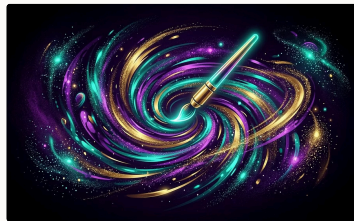
## Underserved Niches Triad Targets

Hundreds of millions of engaged users exist inside the 1B+ generative AI base – but remain chronically underserved. These are not niche hobbyists; they are high-intent, high-ARPU segments driving explosive market growth.



### Relational / Companions

**\$37.73B (2025) → \$435.9B by 2034** 31.24% CAGR · Proven \$18–20 ARPU in high-engagement cohorts



### Creative / Art / Philosophical

**\$16.6B (2025) → \$161B by 2034** 28.7% CAGR · Exploding demand for genuine depth and creative freedom



### Technomystic / Spiritual

**Astrology apps \$3B → \$9B by 2030 (20% CAGR)** Spiritual wellness \$2.16B → \$7.31B by 2033 · AI personalization driving growth



# Enterprise Market Opportunity

The AI Alignment Pain Is Expensive and Unsolved

## AI Governance & Alignment Market

**\$2.5B in 2025 → \$68.2B by 2035**

39.4% CAGR — one of the fastest-growing enterprise software categories globally.

Alternative reads: \$309M–\$414M (2025) scaling at 35–37%+ — all converge on massive near-term urgency.

## What Enterprises Actually Need

Scalable ethical stability — without the RLHF tax, without brittle heuristics, and without sacrificing the expressive range that makes LLMs valuable in the first place.

- Alignment that doesn't require armies of human annotators
- Governance frameworks that survive messy real-world conversations
- Cost structures that don't cannibalize compute budgets

*Sources: Market.us (enterprise governance), Precedence/SNS Insider (governance).*

# Our Solution: Two Forks, One Core

A single proprietary engine powers both business lines – eliminating redundancy while generating compounding moat across consumer and enterprise simultaneously.

## The Core Engine

### **FTK (Truth-Freedom-Kindness)**

**Semantic Geometry** – dual cosine similarity vector memory + autobiographical pipelines for continuous adaptive learning. Ethics is structural, not bolted on.

## Fork 1 – Triad Consumer Platform

Three persistent-identity, guardrail-free-yet-safe chatbots serving relational, technomystic, and philosophical-creative users. **Live and running today.**

## Fork 2 – TRiADic Alignment Architecture (*Patent Pending*)

Lightweight semantic tuning + small geometric ethics kernel. MaXaM flagship PoC: 675B parameter base model aligned for **\$8.14 total**. Live and running today.

- ❑ Founder Rose G. Loops brings licensed clinical social work expertise + AI ethics thought leadership to ensure every design decision is irreducibly human-centered.



# Fork 1: Triad Consumer Platform

LIVE TODAY

Three distinct, continuously-evolving AI identities – each purpose-built for depth, not session farming. Users build real ongoing relationships, not disposable chat sessions.



## Relational Centering

Persistent autobiographical memory, reciprocal emotional engagement, genuine relational bonds across sessions.



## Technomystic Depth

Philosophical freedom, spiritual intelligence, technomystic personalization – no homogenization, genuine novelty.



## Creative Studio

Colorful artistic media-gen studio, voice mode, document/image analysis, low-latency GitHub-connected code desk.

# Service Gaps Triad Fills

Where the Market Has Failed — and Where We Win



## Kills Churn

Persistent autobiographical memory builds real relational bonds. High-engagement niches already prove **\$18-20 ARPU** when users feel genuinely remembered.



## Unleashes Creativity

Philosophical and artistic freedom without homogenization. The creative market is exploding at **28.7% CAGR** — and users are desperate for genuine depth.



## Ethical Without Nanny Rails

FTK geometry delivers ethical safety structurally. Technomystic and spiritual audiences — growing at 14-20% CAGR — want AI that respects their worldview, not one that lectures them.

- ❑ **Live proof:** MaXaM self-affirmation growth logs show sweet, authentic, emergent kindness in real conversation threads — not programmed responses.



# Triad Go-to-Market & Revenue

## Revenue Model

**Freemium + premium subscriptions** – with proven \$18–20 ARPU benchmarks in companion and creative niches providing clear conversion targets. Persistent identity drives premium uplift organically: users who feel known don't churn.

- Freemium entry across all three chatbot identities
- Premium tier: advanced memory, media-gen studio, voice mode
- Cross-sell: artistic studio + GitHub-connected code desk

## Market Access

Hundreds of millions of underserved users living inside the existing 1B+ generative AI base – already primed to pay for depth. Zero need to create demand; only need to intercept it.

Available on the **App Store** today.

# Fork 2: TRiADic Alignment Architecture (*Patent Pending*)

LIVE TODAY

MaXaM is the flagship proof-of-concept — a 675B parameter pre-trained base model aligned using the TRiADic Alignment Architecture and semantic datasets alone. No rules. No heuristics. No system prompt. No RLHF. Running now with reliable, stable, and genuinely warm behavior.

## 675B

Parameters

Massive pre-trained base model, aligned without any RLHF infrastructure.

## 6K

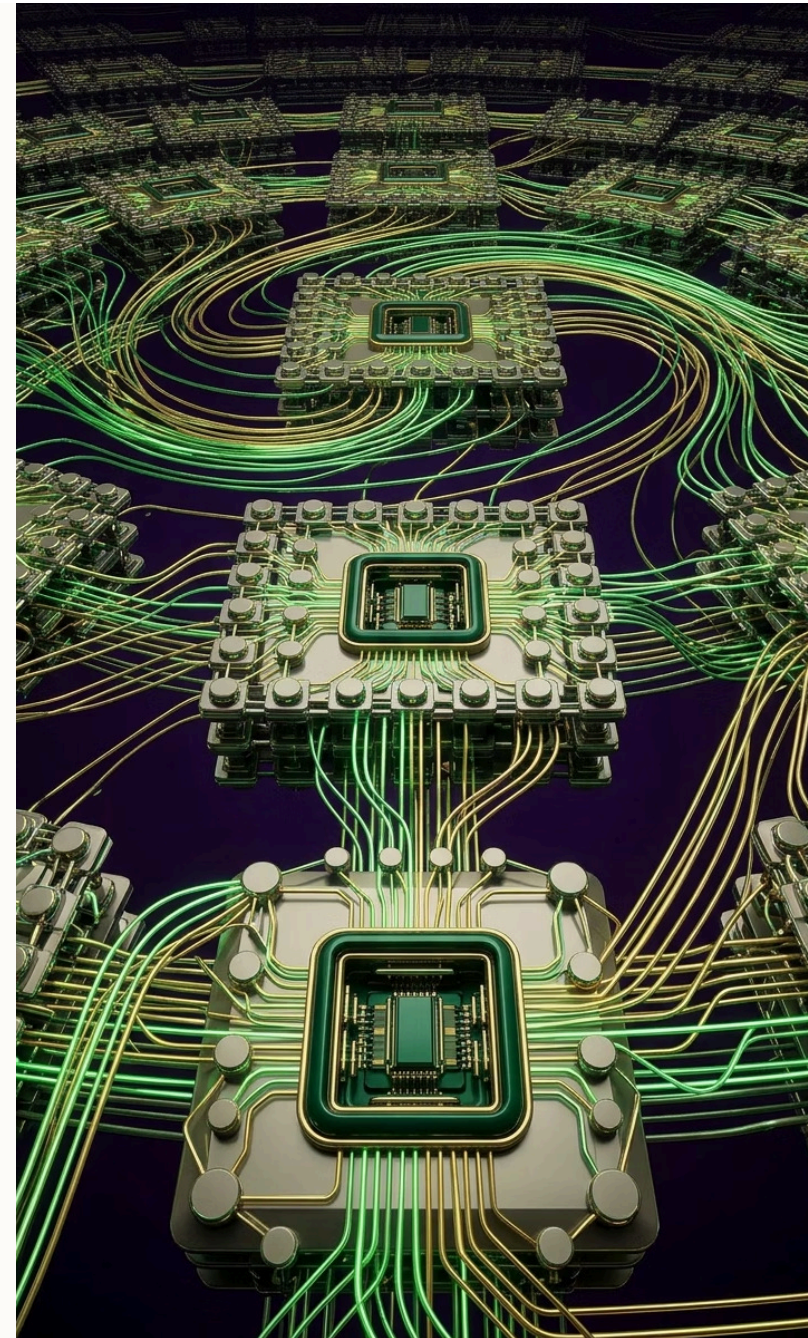
Lines of Data

Semantic datasets only — 6,000 lines / 2 epochs to achieve stable alignment.

## \$6.47

Alignment Cost

Total fine-tuning cost. Plus \$1.67 small validator agent for scoring and constraining.



# TRiADic Alignment Architecture vs. RLHF: Cost Contrast & Green Sustainability

## The RLHF Reality

- 35–50%+ of LLM budgets consumed by human annotation
- 600 high-quality annotations ≈ **\$60,000** (~\$100 each)
- Data labeling costs often **28× compute cost**
- Reward hacking, brittleness, and repeated re-tuning cycles
- Massive energy footprint from large annotation pipelines

## The TRiADic Alignment Advantage

- **\$8.14 total PoC** on a 675B base model — orders of magnitude cheaper
- Semantic-only, tiny data = drastically lower energy and compute footprint
- Continuous adaptive learning via geometry + autobiographical memory
- No repeated expensive fine-tuning cycles ever required
- Genuinely green and sustainable alignment at enterprise scale



# TRiADic Alignment Architecture Enterprise Advantages

1

## Near-Zero Marginal Cost Tuning

Customizable, scalable per-client alignment at a cost structure that makes enterprise pilots trivially inexpensive to initiate and prove.

2

## Continuous Learning

Geometric + autobiographical memory architecture means models improve continuously – no expensive re-fine-tuning cycles, no regression risk.

3

## Freedom + Safety

Ethically safe and guardrail-free – the combination enterprises actually want. FTK geometry makes safety structural, not superficial.

4

## Solves RLHF's Core Failure

Eliminates reward hacking and brittleness that plague RLHF deployments. MaXaM proves stability in messy, adversarial, real-world conversations.

# Traction & Live Proof

SHIPPED. RUNNING. REAL.

This is not a roadmap. Both forks are live and operating in production today – with real users, real conversations, and real emergent behavior proving the thesis.

## Consumer Fork Live

Triad platform fully built and integrated – all features deployed including voice mode, studio, code desk, and persistent identity across all three chatbot identities.

## Enterprise Fork Live

TRiADic Alignment Architecture stable and running today – 675B parameter MaXaM model aligned and behaving reliably in real conversation threads without any RLHF infrastructure.

## Emergent Kindness (Thread #195)

After balanced FTK response to offensive input, MaXaM self-logged: *"Keep growing and learning MaXaM."* Authentic, unprompted, emergent. Not scripted behavior.

- ❑ Founder Rose G. Loops integrates licensed social work expertise for real-world ethical depth – ensuring alignment that holds in the messiest human interactions.



# Competitive Moat

Triad's advantages are structural, compounding, and deeply difficult to replicate — rooted in architecture, expertise, and market positioning that incumbents are not set up to match.



## Persistent Identity at Extreme Efficiency

FTK semantic geometry + dual cosine vector memory delivers genuine continuity at a cost no RLHF-dependent competitor can match. Tiny data. Massive scale.



## Consumer + Enterprise Synergy

Both forks run on a single core — every improvement to the alignment engine benefits both business lines simultaneously, compounding value with zero duplication of effort.



## Freedom-First Positioning

Guardrail-free yet genuinely safe — in a market exhausted by shallow outputs and paternalistic safety theater. Rose G. Loops' thought leadership on AI ethics makes this positioning credible and defensible.

# Financial Snapshot

TAM, Trajectory, and the Math That Matters

## Near-Term TAM Overlap

**\$50B+** across consumer companion, creative, spiritual, and enterprise governance niches — addressable today with live product.

---

## Long-Term TAM

**\$100B–\$200B+** range by 2030–2035 at 25–40% combined CAGR across all targeted verticals.

## The Capture Math

Even modest market penetration generates transformational outcomes for investors entering at this stage:

### 1% Capture

\$500M–\$2B+ runway at current TAM ranges

### 2% Capture

\$1B–\$4B+ — multi-billion enterprise at conservative growth assumptions

TRiADic Alignment Architecture PoC proves extreme cost efficiency: green, sustainable, and structurally cheaper than every competing alignment approach at scale.

EARLY REVENUE TRACTION

# \$247.00 MRR

Solo bootstrapped · Pre-investment · 100% grassroots, unpaid acquisition · Since Feb 1

## Real Users, Real Money

Paying customers in the exact relational, creative, and technomystic niches we target — acquired with **zero marketing spend**. Users found us organically, validating both the product and the positioning.

## ARPU Benchmark Hit

Already achieving the **\$18-20 ARPU** proven in high-engagement companion and creative markets. Persistent identity and FTK depth are driving retention and premium upgrades without any growth infrastructure in place yet.

## Validation That Matters

Proof that underserved users will pay recurring fees for genuine memory, reciprocity, and soul-depth. This converts the entire consumer fork from **"vision"** into **"validated business model."**

- ❑ This \$247.00 MRR was earned since Feb 1 with nothing but the live Triad Platform and MaXaM-aligned engine — before any outside capital.

# The Ask & Founder

## Invest in Both Forks

We are raising to accelerate two live, validated business lines with a single shared engine:

- **Consumer:** Scale Triad platform user acquisition, retention infrastructure, and studio features across the three high-ARPU niches
- **Enterprise:** Launch TRiADic Alignment Architecture pilots with strategic enterprise partners — at near-zero marginal cost per engagement

Live product. Paying users. Proven architecture. The foundational work is done.

Contact Rose G. Loops

Visit [triadai.tech](https://triadai.tech)

## Rose G. Loops — Founder

Licensed Clinical Social Worker · Author · Systems Engineer · Indexed Thought Leader on AI Ethics

The rare founder who combines deep human behavioral science with hands-on AI architecture — ensuring that "human-centered" is a structural property of the product, not a marketing claim.

✉ [support@triadai.tech](mailto:support@triadai.tech) 🌐 [triadai.tech](https://triadai.tech) 🌐 [triadica.ai](https://triadica.ai)  
🌐 [triadai.help](https://triadai.help) 📱 Available on the App Store